

# Christmas Carols

## #1 The First Noel

Musical notation for the first system of 'The First Noel'. It consists of three staves of music in 3/4 time. The first staff starts with a whole rest followed by a quarter note G4, a quarter note A4, and a quarter note B4. The second staff continues with a quarter note C5, a quarter note B4, a quarter note A4, and a quarter note G4. The third staff continues with a quarter note F4, a quarter note E4, a quarter note D4, and a quarter note C4. The piece ends with a double bar line and a sharp sign.

## #2 It Came Upon the Midnight Clear

Musical notation for the first system of 'It Came Upon the Midnight Clear'. It consists of three staves of music in 6/8 time. The first staff starts with a whole rest followed by a quarter note G4, a quarter note A4, and a quarter note B4. The second staff continues with a quarter note C5, a quarter note B4, a quarter note A4, and a quarter note G4. The third staff continues with a quarter note F4, a quarter note E4, a quarter note D4, and a quarter note C4. The piece ends with a double bar line and a sharp sign.

## #3 Hark! The Herald Angels Sing

Musical notation for the first system of 'Hark! The Herald Angels Sing'. It consists of three staves of music in 4/4 time. The first staff starts with a whole rest followed by a quarter note G4, a quarter note A4, and a quarter note B4. The second staff continues with a quarter note C5, a quarter note B4, a quarter note A4, and a quarter note G4. The third staff continues with a quarter note F4, a quarter note E4, a quarter note D4, and a quarter note C4. The piece ends with a double bar line and a sharp sign.

## #4 O Come, All Ye Faithful

63



71



78



Musical notation for measures 63-77 of the piece. The key signature is one sharp (F#) and the time signature is 6/8. The notation consists of three staves of music.

## #5 Silent Night

84




90




Musical notation for measures 84-95 of the piece. The key signature is two sharps (F# and C#) and the time signature is 6/8. The notation consists of two staves of music.

## #6 While Shepherds Watch Their Flocks

96




101




Musical notation for measures 96-105 of the piece. The key signature is two flats (Bb and Eb) and the time signature is 4/4. The notation consists of two staves of music.

## #7 O, Little Town of Bethlehem


107



115



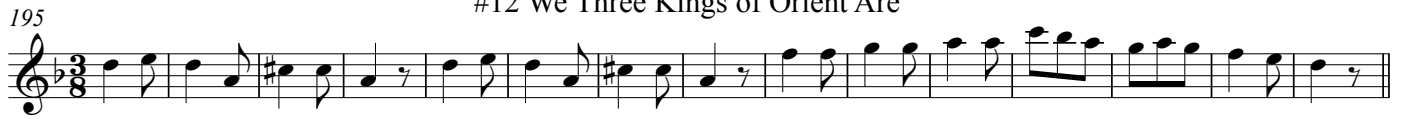
120



Musical notation for measures 107-124 of the piece. The key signature is one sharp (F#) and the time signature is 2/4. The notation consists of three staves of music.



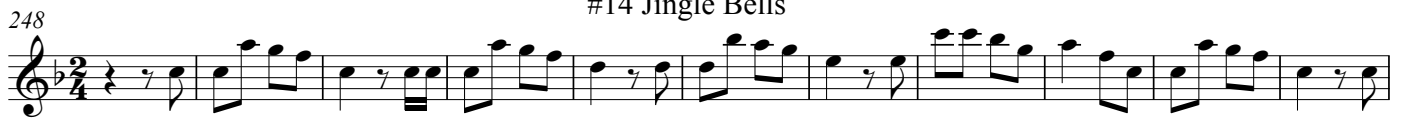
## #12 We Three Kings of Orient Are



## #13 God Rest You Merry, Gentlemen



## #14 Jingle Bells



275

#15 Deck the Hall

Musical notation for #15 Deck the Hall. The first staff is in treble clef, key of D major (one sharp), and common time (C). It contains two measures of music. The second staff is also in treble clef, key of D major, and 2/4 time. It contains two measures of music. The piece concludes with a double bar line and a key signature change to D minor (two sharps).

#16 Jolly Old Saint Nicholas

Musical notation for #16 Jolly Old Saint Nicholas. The first staff is in treble clef, key of D major (one sharp), and 2/4 time. It contains two measures of music. The second staff is also in treble clef, key of D major, and 2/4 time. It contains two measures of music. The piece concludes with a double bar line and a key signature change to D minor (two sharps).

#17 O Faithful Pine

Musical notation for #17 O Faithful Pine. The first staff is in treble clef, key of D major (one sharp), and 3/4 time. It contains two measures of music, with a first ending bracket over the second measure and a second ending bracket over the third measure. The second staff is also in treble clef, key of D major, and 3/4 time. It contains two measures of music. The piece concludes with a double bar line and a key signature change to D minor (two sharps).

273

Musical notation for #17 O Faithful Pine (continuation). The staff is in treble clef, key of D major (one sharp), and 3/4 time. It contains two measures of music. The piece concludes with a double bar line and a key signature change to D minor (two sharps).