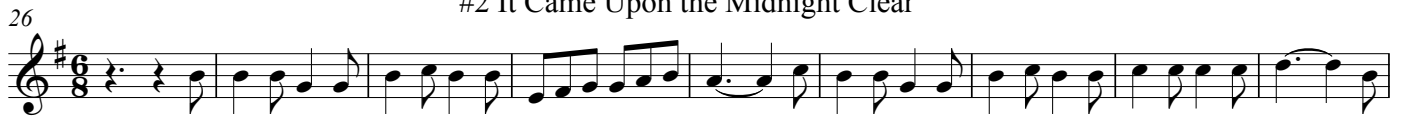


Christmas Carols

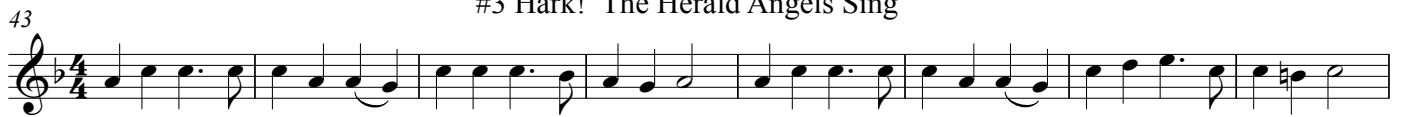
#1 The First Noel



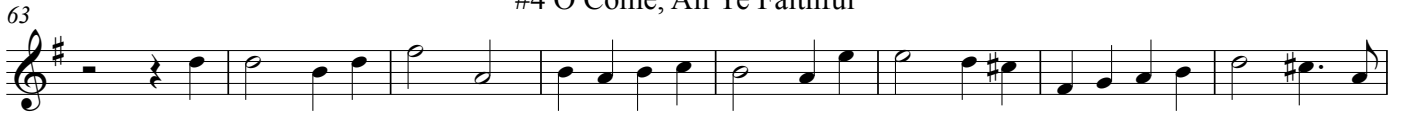
#2 It Came Upon the Midnight Clear



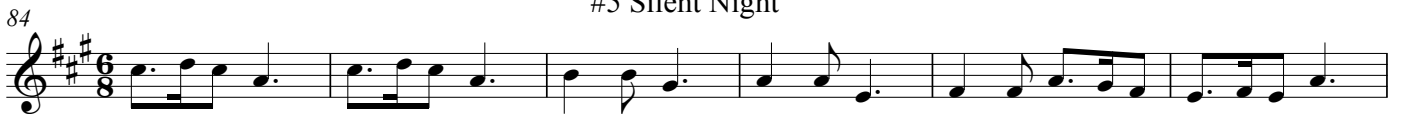
#3 Hark! The Herald Angels Sing



#4 O Come, All Ye Faithful



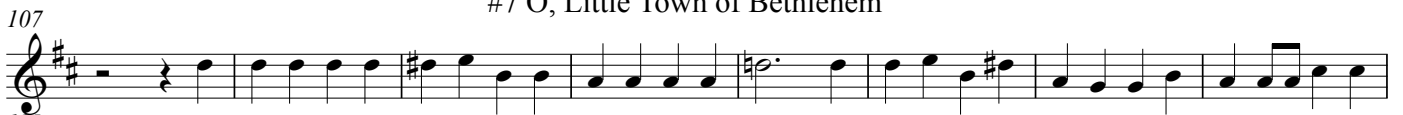
#5 Silent Night



#6 While Shepherds Watch Their Flocks



#7 O, Little Town of Bethlehem



#8 O Come, Little Children

124



133



#9 Away in the Manger

141



150



#10 Joy to the World

158



169



#11 March of the Three Kings

178



184



190



#12 We Three Kings of Orient Are

195



210

Chorus Melody in 3rd part



219

Melody



#13 God Rest You Merry, Gentlemen

227



235



242



#14 Jingle Bells

248



259



267



275

#15 Deck the Hall

Musical notation for #15 Deck the Hall. The first staff is in treble clef, key of D major (one sharp), and common time (C). It contains two measures of music, followed by a repeat sign. The second staff is also in treble clef, key of D major, and 2/4 time. It contains two measures of music, followed by a repeat sign and a key signature change to D minor (two sharps).

#16 Jolly Old Saint Nicholas

Musical notation for #16 Jolly Old Saint Nicholas. The first staff is in treble clef, key of D major (one sharp), and 2/4 time. It contains two measures of music, followed by a repeat sign. The second staff is also in treble clef, key of D major, and 2/4 time. It contains two measures of music, followed by a repeat sign and a key signature change to D minor (two sharps).

#17 O Faithful Pine

Musical notation for #17 O Faithful Pine. The first staff is in treble clef, key of D major (one sharp), and 3/4 time. It contains two measures of music, followed by a repeat sign. The second staff is also in treble clef, key of D major, and 3/4 time. It contains two measures of music, followed by a repeat sign and a key signature change to D minor (two sharps). The notation includes first and second endings.

273

Musical notation for #17 O Faithful Pine (continuation). The staff is in treble clef, key of D major (one sharp), and 3/4 time. It contains two measures of music, followed by a repeat sign and a key signature change to D minor (two sharps).