

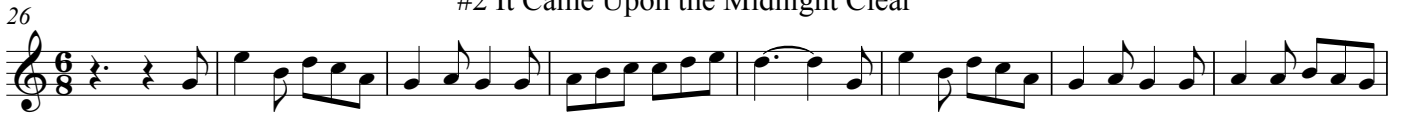
Clarinet Part 1

# Christmas Carols

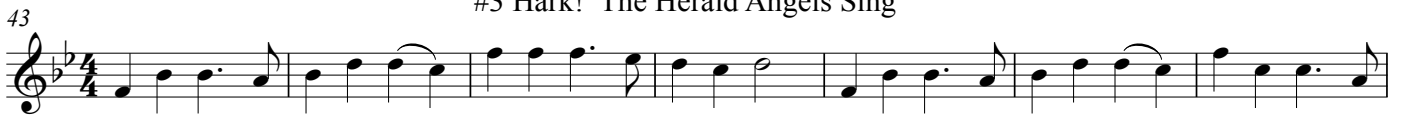
## #1 The First Noel



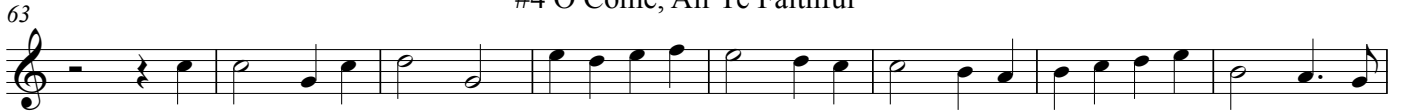
## #2 It Came Upon the Midnight Clear



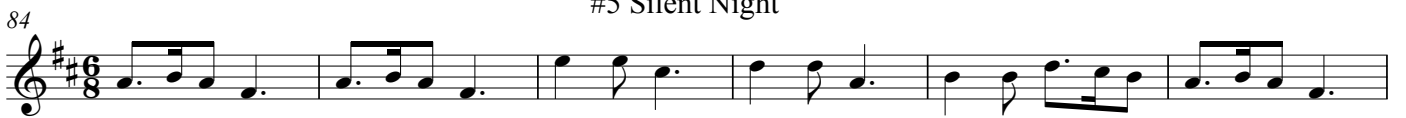
## #3 Hark! The Herald Angels Sing



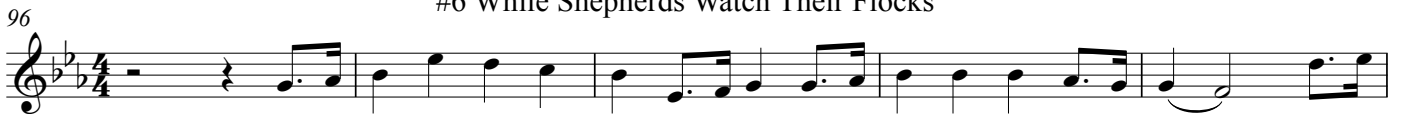
## #4 O Come, All Ye Faithful



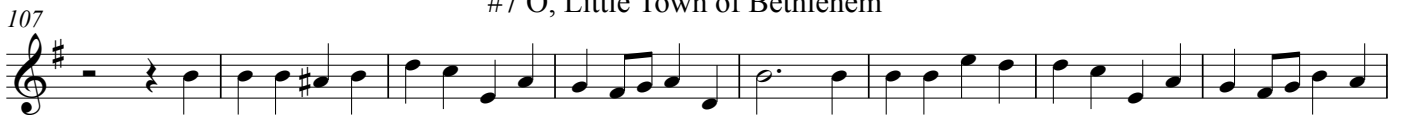
## #5 Silent Night



## #6 While Shepherds Watch Their Flocks



## #7 O, Little Town of Bethlehem



## #8 O Come, Little Children

124



133



## #9 Away in the Manger

141



150



## #10 Joy to the World

158



169



## #11 March of the Three Kings

178



184



190



## #12 We Three Kings of Orient Are

195



210

## Chorus Melody in 3rd part



218

## Melody



## #13 God Rest You Merry, Gentlemen

227



235



242



## #14 Jingle Bells

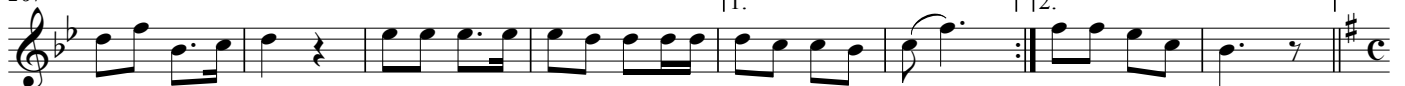
248



259



267



275

## #15 Deck the Hall

Musical score for #15 Deck the Hall, Clarinet Part 1. The piece is in C major and common time (C). It consists of two staves. The first staff contains the melody, starting with a quarter rest, followed by quarter notes G4, A4, B4, and C5. The second staff contains the accompaniment, starting with a quarter note G4, followed by quarter notes A4, B4, and C5. The piece concludes with a double bar line and repeat sign.

## #16 Jolly Old Saint Nicholas

Musical score for #16 Jolly Old Saint Nicholas, Clarinet Part 1. The piece is in C major and 2/4 time. It consists of two staves. The first staff contains the melody, starting with a quarter note G4, followed by quarter notes A4, B4, and C5. The second staff contains the accompaniment, starting with a quarter note G4, followed by quarter notes A4, B4, and C5. The piece concludes with a double bar line and repeat sign.

## #17 O Faithful Pine

Musical score for #17 O Faithful Pine, Clarinet Part 1. The piece is in C major and 3/4 time. It consists of two staves. The first staff contains the melody, starting with a quarter rest, followed by quarter notes G4, A4, and B4. The second staff contains the accompaniment, starting with a quarter note G4, followed by quarter notes A4, B4, and C5. The piece concludes with a double bar line and repeat sign.

273

Musical score for #17 O Faithful Pine, Clarinet Part 1 (continuation). The piece is in C major and 3/4 time. It consists of one staff. The melody starts with a quarter note G4, followed by quarter notes A4, B4, and C5. The piece concludes with a double bar line and repeat sign.