

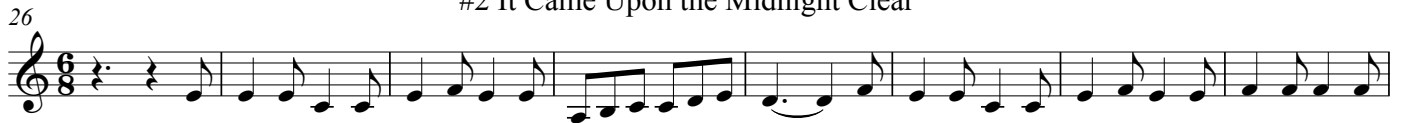
Clarinet Part 2

Christmas Carols

#1 The First Noel



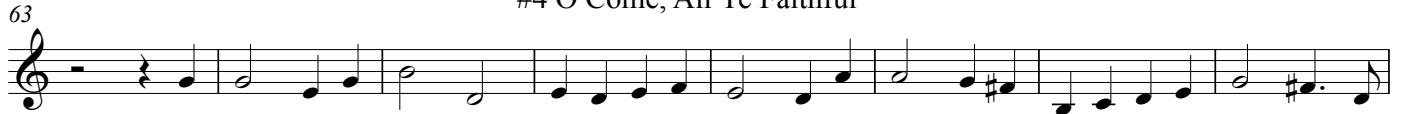
#2 It Came Upon the Midnight Clear



#3 Hark! The Herald Angels Sing



#4 O Come, All Ye Faithful



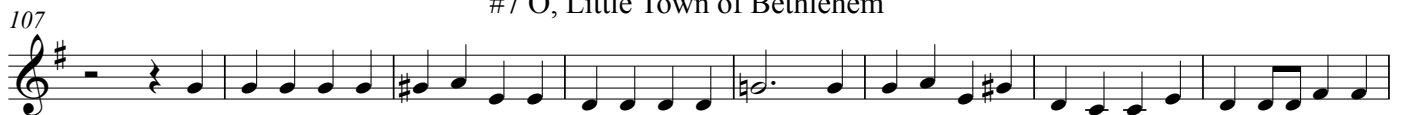
#5 Silent Night



#6 While Shepherds Watch Their Flocks



#7 O, Little Town of Bethlehem



#12 We Three Kings of Orient Are

195



209

Chorus Melody in 3rd part



218

Melody



#13 God Rest You Merry, Gentlemen

227



235



242



#14 Jingle Bells

248



259



267



#15 Deck the Hall

275

Musical notation for #15 Deck the Hall. The first staff is in treble clef with a key signature of one sharp (F#) and a common time signature (C). It contains two measures of music, followed by a repeat sign and two more measures. The second staff is also in treble clef with a key signature of one sharp (F#) and a 2/4 time signature. It contains two measures of music, followed by a repeat sign and two more measures.

#16 Jolly Old Saint Nicholas

Musical notation for #16 Jolly Old Saint Nicholas. The first staff is in treble clef with a key signature of one sharp (F#) and a 2/4 time signature. It contains two measures of music, followed by a repeat sign and two more measures. The second staff is also in treble clef with a key signature of one sharp (F#) and a 3/4 time signature. It contains two measures of music, followed by a repeat sign and two more measures.

#17 O Faithful Pine

Musical notation for #17 O Faithful Pine. The first staff is in treble clef with a key signature of one sharp (F#) and a 3/4 time signature. It contains two measures of music, followed by a repeat sign and two more measures. The second staff is also in treble clef with a key signature of one sharp (F#) and a 3/4 time signature. It contains two measures of music, followed by a repeat sign and two more measures. The notation includes first and second endings.

273

Musical notation for #17 O Faithful Pine (continuation). The first staff is in treble clef with a key signature of one sharp (F#) and a 3/4 time signature. It contains two measures of music, followed by a repeat sign and two more measures. The second staff is also in treble clef with a key signature of one sharp (F#) and a 3/4 time signature. It contains two measures of music, followed by a repeat sign and two more measures.