

Horn Part 2

Christmas Carols

#1 The First Noel

Musical notation for the first system of 'The First Noel'. It consists of three staves of music in a 3/4 time signature with a key signature of two flats (B-flat and E-flat). The first staff begins with a whole rest followed by a series of quarter and eighth notes. The second staff continues the melody with similar rhythmic patterns. The third staff concludes the piece with a final cadence in a 6/8 time signature.

#2 It Came Upon the Midnight Clear

Musical notation for the first system of 'It Came Upon the Midnight Clear'. It consists of three staves of music in a 6/8 time signature with a key signature of two flats. The first staff starts with a whole rest followed by eighth and quarter notes. The second staff features a long melodic line with various intervals. The third staff ends with a final cadence in a 4/4 time signature.

#3 Hark! The Herald Angels Sing

Musical notation for the first system of 'Hark! The Herald Angels Sing'. It consists of three staves of music in a 4/4 time signature with a key signature of three flats (B-flat, E-flat, and A-flat). The first staff begins with a quarter note followed by a series of quarter and eighth notes. The second staff continues the melody with a mix of note values. The third staff concludes the piece with a final cadence.

#4 O Come, All Ye Faithful

63



71



78



#5 Silent Night

84



90



#6 While Shepherds Watch Their Flocks

96



101



#7 O, Little Town of Bethlehem

107



115



120



#8 O Come, Little Children

124



133



#9 Away in the Manger

141



150



#10 Joy to the World

158



169



#11 March of the Three Kings

178



184



190



#12 We Three Kings of Orient Are

195



210 Chorus Melody in 3rd part



219 Melody



#13 God Rest You Merry, Gentlemen

227



235



242



#14 Jingle Bells

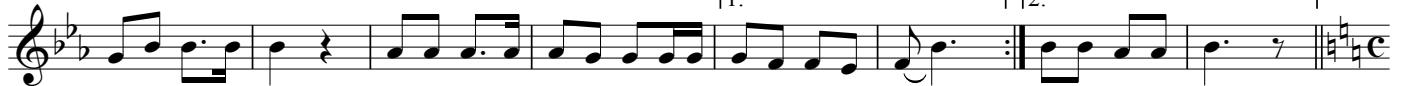
248



259



267



#15 Deck the Hall

275

Musical notation for #15 Deck the Hall. The first staff is in common time (C) and contains two measures of music. The second staff is in 2/4 time and contains two measures of music. The piece concludes with a double bar line and a key signature change to B-flat major.

#16 Jolly Old Saint Nicholas

Musical notation for #16 Jolly Old Saint Nicholas. The first staff is in 2/4 time and contains two measures of music. The second staff is in 3/4 time and contains two measures of music. The piece concludes with a double bar line and a key signature change to B-flat major.

#17 O Faithful Pine

Musical notation for #17 O Faithful Pine. The first staff is in 3/4 time and contains two measures of music, with first and second endings indicated. The second staff is in 3/4 time and contains two measures of music. The piece concludes with a double bar line and a key signature change to B-flat major.

273