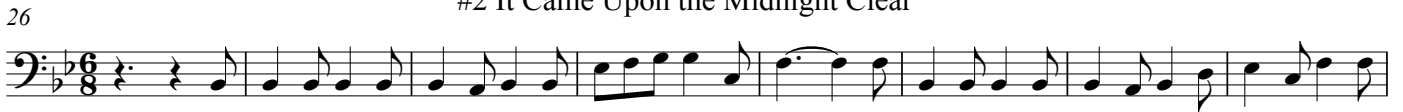


Christmas Carols

#1 The First Noel



#2 It Came Upon the Midnight Clear



#3 Hark! The Herald Angels Sing



#4 O Come, All Ye Faithful

63



71



79



#5 Silent Night

84



90



#6 While Shepherds Watch Their Flocks

96



101



#7 O, Little Town of Bethlehem

107



115



120



124

#8 O Come, Little Children



133



141

#9 Away in the Manger



150



158

#10 Joy to the World



169



178

#11 March of the Three Kings



185



190



195 #12 We Three Kings of Orient Are



210 Chorus Melody in 3rd part



219 Melody



227 #13 God Rest You Merry, Gentlemen



235



242



248 #14 Jingle Bells



262



275 #15 Deck the Hall



#16 Jolly Old Saint Nicholas

Two staves of musical notation for the piece "#16 Jolly Old Saint Nicholas". The first staff is in bass clef, 2/4 time, and the second staff is in bass clef, 3/4 time. The key signature has two flats (B-flat and E-flat).

#17 O Faithful Pine

One staff of musical notation for the piece "#17 O Faithful Pine". The staff is in bass clef, 3/4 time. The key signature has two flats (B-flat and E-flat). The piece includes a first ending (1.) and a second ending (2.).

273

A continuation of the musical notation for "#17 O Faithful Pine" on a single staff in bass clef, 3/4 time. The key signature has two flats (B-flat and E-flat).