

Christmas Carols

#1 The First Noel

Musical notation for 'The First Noel' in 3/4 time, key of B-flat. The piece consists of three staves of music. The first staff starts with a whole rest followed by a quarter note G4, a quarter note A4, and a quarter note B4. The second staff continues with a quarter note C5, a quarter note B4, a quarter note A4, and a quarter note G4. The third staff concludes with a quarter note F4, a quarter note E4, a quarter note D4, and a final whole note C4. The piece ends with a double bar line and a repeat sign.

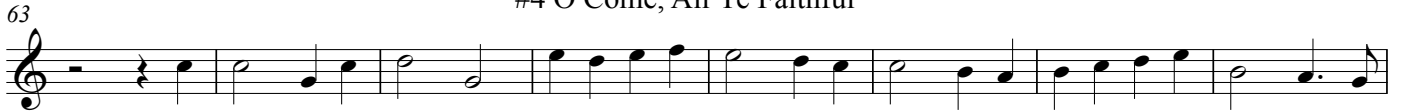
#2 It Came Upon the Midnight Clear

Musical notation for 'It Came Upon the Midnight Clear' in 6/8 time, key of B-flat. The piece consists of three staves of music. The first staff begins with a whole rest, followed by a quarter note G4, a quarter note A4, and a quarter note B4. The second staff continues with a quarter note C5, a quarter note B4, a quarter note A4, and a quarter note G4. The third staff concludes with a quarter note F4, a quarter note E4, a quarter note D4, and a final whole note C4. The piece ends with a double bar line and a repeat sign.

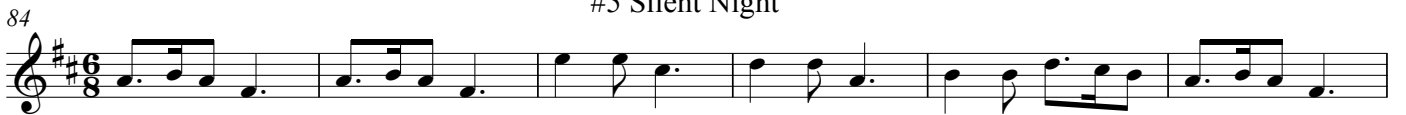
#3 Hark! The Herald Angels Sing

Musical notation for 'Hark! The Herald Angels Sing' in 4/4 time, key of B-flat. The piece consists of three staves of music. The first staff starts with a quarter note G4, a quarter note A4, a quarter note B4, and a quarter note C5. The second staff continues with a quarter note B4, a quarter note A4, a quarter note G4, and a quarter note F4. The third staff concludes with a quarter note E4, a quarter note D4, a quarter note C4, and a final whole note B3. The piece ends with a double bar line and a repeat sign.

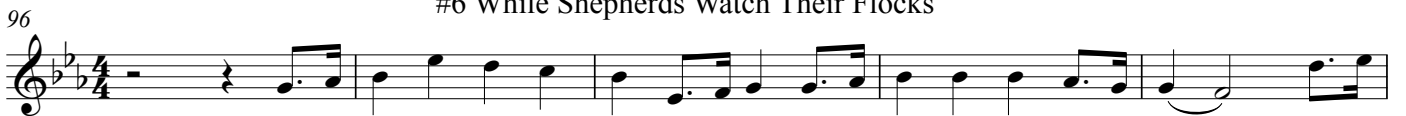
#4 O Come, All Ye Faithful



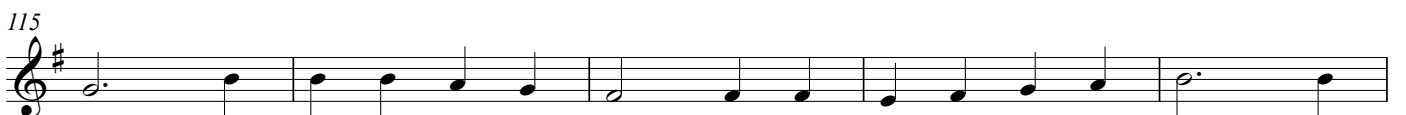
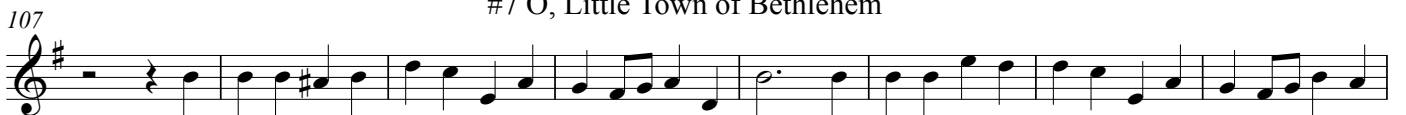
#5 Silent Night



#6 While Shepherds Watch Their Flocks



#7 O, Little Town of Bethlehem



#8 O Come, Little Children

124



133



#9 Away in the Manger

141



150



#10 Joy to the World

158



169



#11 March of the Three Kings

178



184



190



#12 We Three Kings of Orient Are

195



210

Chorus Melody in 3rd part



218

Melody



#13 God Rest You Merry, Gentlemen

227



235



242



#14 Jingle Bells

248



259



267



#15 Deck the Hall

275

Musical notation for #15 Deck the Hall. The first staff is in treble clef with a key signature of one sharp (F#) and a common time signature (C). It contains eight measures of music, including a repeat sign in the fifth measure. The second staff is also in treble clef with a key signature of one sharp (F#) and a 2/4 time signature. It contains eight measures of music, ending with a double bar line and a 2/4 time signature.

#16 Jolly Old Saint Nicholas

Musical notation for #16 Jolly Old Saint Nicholas. The first staff is in treble clef with a key signature of one sharp (F#) and a 2/4 time signature. It contains eight measures of music. The second staff is also in treble clef with a key signature of one sharp (F#) and a 3/4 time signature. It contains eight measures of music, ending with a double bar line and a 3/4 time signature.

#17 O Faithful Pine

Musical notation for #17 O Faithful Pine. The first staff is in treble clef with a key signature of one sharp (F#) and a 3/4 time signature. It contains eight measures of music, including first and second endings. The second staff is also in treble clef with a key signature of one sharp (F#) and a 3/4 time signature. It contains eight measures of music, ending with a double bar line and a 3/4 time signature.