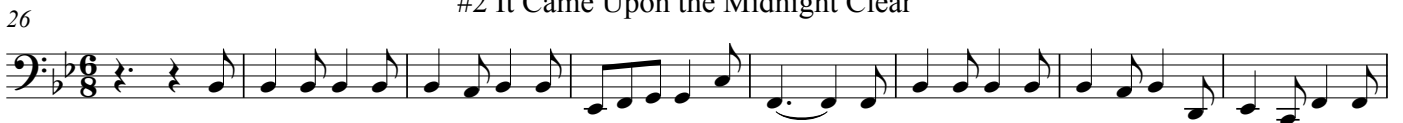


Christmas Carols

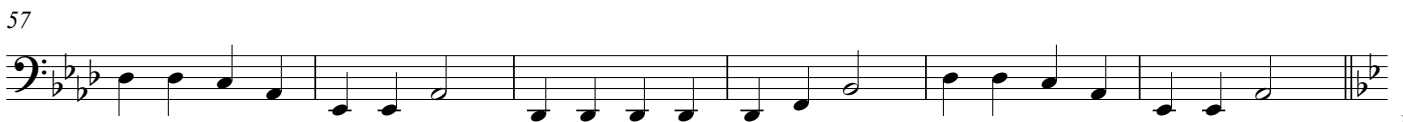
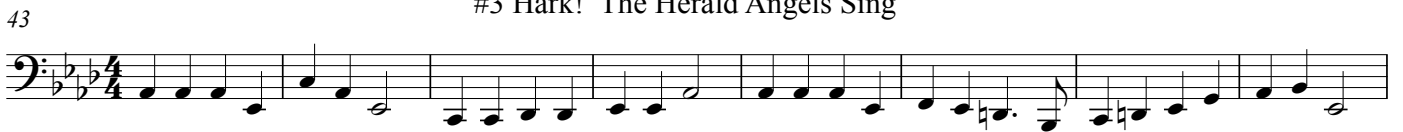
#1 The First Noel



#2 It Came Upon the Midnight Clear



#3 Hark! The Herald Angels Sing



63

#4 O Come, All Ye Faithful



71



79

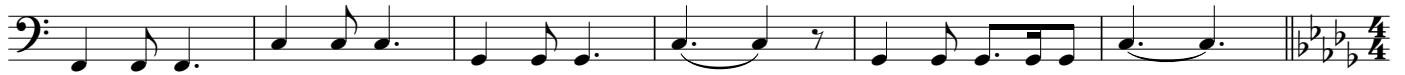


84

#5 Silent Night



90



96

#6 While Shepherds Watch Their Flocks



101



107

#7 O, Little Town of Bethlehem



115



120



124

#8 O Come, Little Children

133

141

#9 Away in the Manger

150

158

#10 Joy to the World

169

178

#11 March of the Three Kings

185

190

195 #12 We Three Kings of Orient Are



209 Chorus Melody in 3rd part



218 Melody



227 #13 God Rest You Merry, Gentlemen



235



242



248 #14 Jingle Bells



262



275

#15 Deck the Hall



#16 Jolly Old Saint Nicholas

Two staves of musical notation for the piece "#16 Jolly Old Saint Nicholas". The first staff is in bass clef, 2/4 time, and the second staff is in bass clef, 3/4 time. The music consists of eighth and quarter notes with rests.

#17 O Faithful Pine

One staff of musical notation for the piece "#17 O Faithful Pine". The staff is in bass clef, 3/4 time. It features a first ending (1.) and a second ending (2.) indicated by bracketed lines above the notes.

273

A continuation of the musical notation for "#17 O Faithful Pine" on a single bass clef staff in 3/4 time, ending with a double bar line and a key signature change to two flats.